



Weill Cornell Medicine
Meyer Cancer Center

NewYork-Presbyterian

WE ARE THE CURE

SOLUTIONS TO BREAST HEALTH DISPARITIES



Tuesday, October 8, 2024
Wednesday, October 9, 2024
Thursday, October 10, 2024

#BHD2024

This activity has been approved for *AMA PRA Category 1 Credit(s)*[™]

DAY ONE

TUESDAY, OCTOBER 8, 2024 | 6:00 PM TO 8:30 PM

WE ARE THE CURE: INTERNATIONAL CENTER FOR THE STUDY OF BREAST CANCER SUBTYPES ICSBCS CELEBRATES 20 YEARS



Lisa A. Newman, M.D., MPH, FACS, FASCO

Chief, Division of Breast Surgery
Director, Interdisciplinary Breast Program
Medical Director and Founder, International Center for the Study of Breast Cancer Subtypes
Weill Cornell Medicine and NewYork-Presbyterian Hospital Network

WE ARE THE CURE WITH GENOMICS RESEARCH



Melissa Davis, PhD

Director, Institute of Translational Genomic Medicine (ITGM)
Georgia Research Alliance Distinguished Investigator
Breast Cancer Research Foundation Investigator
Team Lead, SAMBAI
Cancer Grand Challenges
Morehouse School of Medicine
Institute of Translational Genomic Medicine

WE ARE THE CURE WHEN WE REPRESENT: THE IMPORTANCE OF DEI PIPELINE PROGRAMS



Minerva Romero Arenas, M.D., MPH, FACS

Assistant Professor of Surgery
New York Presbyterian/ Weill Cornell Medicine
General & Endocrine Surgeon
New York Presbyterian Brooklyn Methodist Hospital

WE ARE THE CURE: WHEN WE DRIVE TOWARDS HEALTH EQUITY



Jeffrey F. Hines, M.D.

Chief Diversity Officer, UConn Health Departments of Obstetrics and Gynecology and Public Health Sciences
University of Connecticut School of Medicine

WE ARE THE CURE: WHEN WE THRIVE



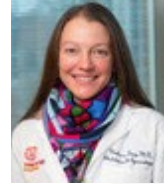
Donna C. Kirton

Survivor

DAY TWO

WEDNESDAY, OCTOBER 9, 2024 | 6 PM TO 8:30 PM

IMPORTANCE OF CASCADE GENETIC TESTING



Melissa Frey, M.D., MS

Associate Professor Division of Gynecologic Oncology
Director of Genetics and Personalized Cancer Prevention Program
New York Presbyterian/Weill Cornell Medicine

OPTIMIZING FERTILITY PRESERVATION FROM A HEALTH EQUITY LENS



Kristin E. Rojas, M.D., F.A.C.S., F.S.S.O.

Associate Professor of Surgery, Miller School of Medicine
Division of Surgical Oncology, Department of Surgery
University of Miami Health System
Director, MUSIC (Menopause, Urogenital, Sexual Health and Intimacy Clinic) and Sexual Health After Cancer Program
Sylvester Comprehensive Cancer Center

SEXUAL DYSFUNCTION CONSIDERATIONS FOR YOUR PATIENTS



Olivia Cheng, M.D.

Assistant Professor of Surgery
New York Presbyterian Weill Cornell
Surgical Oncologist
NewYork-Presbyterian Brooklyn Methodist Hospital

MINIMIZING RISK WITH DIET AND EXERCISE ONCOLOGY



Lauren Elreda, M.D.

Director, Breast Medical Oncology NYP Queens
Meyer Cancer Center Clinical Site Trials Leader
Assistant Professor of Clinical Medicine
Division of Hematology/Oncology
Weill Cornell Medicine
New York Presbyterian Queens

INNOVATIONS IN SURGICAL/NON-SURGICAL MANAGEMENT OF LYMPHEDEMA



Nasim Chowdhury, M.D., FAAPMR

Medical Director Of Cancer Rehabilitation
Weill Cornell Medical Center
NewYork-Presbyterian Medical Group Queens
Chief of the Department of Rehabilitation Medicine
NewYork-Presbyterian Queens

INTEGRATIVE MEDICINE AND SYMPTOM MANAGEMENT



Michelle Loy, M.D.

Assistant Attending Physician
Assistant Professor of Pediatrics in Clinical Medicine
Assistant Professor of Clinical Pediatrics
NewYork-Presbyterian and Weill Cornell Medicine

WE ARE THE CURE WHEN WE FIGHT



Yolanda Kellogg

Survivor

DAY THREE

THURSDAY, OCTOBER 10, 2024 | 6:00 PM TO 8:30 PM

WE ARE THE CURE WHEN WE CARE



Noralie Nuñez, BA

Outreach Coordinator
Weill Cornell Medicine/New York Presbyterian

BREAST IMAGING: WE ARE THE CURE FOR BREAST CANCER DIAGNOSIS AND TREATMENT



Kemi Babagemi, M.D.

Vice Chair for Diversity, Equity and Inclusion
Associate Professor of Clinical Radiology
New York Presbyterian Weill Cornell Medicine

MEDICAL ONCOLOGY: WE ARE THE CURE FOR YOUNG WOMEN WITH HER2+ BREAST CANCER



Evelyn T. Taiwo, M.D.

Associate Professor of Clinical Medical Oncology
NewYork-Presbyterian/Weill Cornell Medicine
NewYork-Presbyterian Brooklyn Methodist Hospital

BREAST SURGICAL ONCOLOGY: WE ARE THE CURE WITH DELIVERY, INNOVATION AND EQUITY



Vivian Jolley Bea, M.D., M.B.S., F.A.C.S.

Assistant Professor of Surgery
NewYork-Presbyterian/Weill Cornell Medicine
Chief, Division of Breast Surgery, Director, Breast Program
New-York Presbyterian-Brooklyn Methodist Hospital

RADIATION ONCOLOGY: WE ARE THE CURE WITH PRECISION RADIATION THERAPY



Onyinye Balogun, M.D.

Assistant Professor of Clinical Radiation Oncology
NewYork-Presbyterian/Weill Cornell Medicine
NewYork-Presbyterian Brooklyn Methodist Hospital

PLASTICS AND RECONSTRUCTIVE SURGERY: WE ARE THE CURE WITH INNOVATIONS IN BREAST RECONSTRUCTION



Lisa Gfrerer, M.D., PhD

Assistant Professor of Surgery
Plastic and Reconstructive Surgery
NewYork-Presbyterian and Weill Cornell Medicine

Accreditation & Credit Designation

This activity has been planned and implemented in accordance with the accreditation requirements and policies of the Accreditation Council for Continuing Medical Education (ACCME) through the providership of Weill Cornell Medical College. Weill Cornell Medical College is accredited by the Accreditation Council for Continuing Medical Education to provide continuing medical education for physicians. Weill Cornell Medical College designates this live activity for a maximum of 7.25 *AMA PRA Category 1 Credit(s)*[™]. Physicians should claim only the credit commensurate with the extent of their participation in the activity.

Evaluation

An evaluation form will be emailed to you upon completion of the course. In order to receive CME credit, you must complete the online evaluation form by November 1st, 2024. You should claim only the credit commensurate with the extent of your participation. Completion of the Evaluation form will allow us to assess the degree to which the activity met its objectives. It will also guide the planning of future activities and inform decisions about improving the educational program.

Disclosure Policy

It is the policy of Weill Cornell Medical College to adhere to ACCME Criteria, Policies, and Standards for Commercial Support and content validation in order to ensure fair balance, independence, objectivity, and scientific rigor in all its sponsored activities. All speakers, Course Directors, Co-Course Directors, planners, reviewers, and staff members participating in sponsored activities are expected to disclose relevant financial relationships pertaining to their contribution to the activity. Relationship information is analyzed to determine whether conflicts of interest exist. All conflicts of interest are resolved prior to participation in the planning or implementation of this activity. Presenters and authors are also expected to disclose any discussion of (1) offlabel or investigational uses of FDA approved commercial products or devices or (2) products or devices not yet approved in the United States. All disclosures will be made at the time of this CME activity.

WE ARE THE CURE

SOLUTIONS TO BREAST BREAST HEALTH DISPARITIES

PLANNING COMMITTEE

Vivian J. Bea, MD, MBS, FACS

Assistant Professor of Surgery
NewYork-Presbyterian/Weill Cornell Medicine
Chief, Division of Breast Surgery
Director, Breast Program
New-York Presbyterian-Brooklyn Methodist Hospital

Evelyn Taiwo, M.D.

Associate Professor of Clinical Medical Oncology
NewYork-Presbyterian/Weill Cornell Medicine
NewYork-Presbyterian Brooklyn Methodist Hospital

Onyinye D. Balogun, M.D.

Assistant Professor of Clinical Radiation Oncology
NewYork-Presbyterian/Weill Cornell Medicine
NewYork-Presbyterian Brooklyn Methodist Hospital

Lisa A. Newman, M.D., MPH, FACS, FASCO

Chief, Division of Breast Surgery
Director, Interdisciplinary Breast Program
Medical Director and Founder, International Center for the Study of Breast Cancer Subtypes
Weill Cornell Medicine/New York Presbyterian Hospital Network
2nd Vice President, American College of Surgeons

Noralie Nuñez, B.A.

Breast Outreach Coordinator
Department of Breast Surgery, Weill Cornell Medicine



Weill Cornell Medicine
Meyer Cancer Center

NewYork-Presbyterian