

BREAST HEALTH DISPARITIES

IN THE ERA OF COVID-19

Monday, September 28, 2020 – Saturday, October 3, 2020



VIRTUAL EVENT

This activity has been approved for *AMA PRA Category 1 Credit(s)*[™]

Breast Health Disparities in the Era of COVID-19

Monday, September 28, 2020 to
Saturday, October 3, 2020

Course Directors



Vivian J. Bea, MD, MBS, FACS
Assistant Professor of Surgery
NewYork-Presbyterian/Weill Cornell Medicine
Chief of Breast Surgical Oncology
NewYork Presbyterian/Brooklyn Methodist Hospital



Evelyn Robles-Rodriguez, DNP, APN
Director, Outreach, Prevention & Survivorship
MD Anderson Cancer Center at Cooper

Monday, September 28, 2020 | 6:00pm to 7:30pm

Keynote Address

Intersections Between COVID-19 Pandemic Disparities & Breast Cancer Disparities: Preventing One Public Health Crisis from Begetting Another



Lisa A. Newman, MD MPH FACS FASCO

(Interim) Assistant Professor of Surgery
Chief of the Section of Breast Surgery at NewYork-Presbyterian/Weill Cornell Medicine
Chief, Breast Cancer Disease Management Team
Chief of the Breast Surgical Oncology Programs the NewYork-Presbyterian/Weill Cornell Medicine Network

'State of the Art' Screening & Detection

Tuesday, September 29, 2020 | 6:00pm to 8:00pm



Survivor Speaker

Diamonique Valentine

Social Determinants of Early Breast Cancer Detection



Erica Phillips, MD, MS

Associate Professor of Clinical Medicine
Associate Director of Community Outreach and Engagement
NewYork-Presbyterian/Weill Cornell Medicine Meyer Cancer Center

Epidemiology of Breast Cancer and COVID-19: Impact on Disparities



Rulla Tamimi, ScD

(Interim) Assistant Professor of Population Health Sciences
Division Chief of Epidemiology
Associate Director of Population Science
Weill Cornell Medicine Meyer Cancer Center

Disparities in Breast Imaging



Allison F. Gittens, MD

Assistant Professor of Radiology
Cooper University Health Care



Michelle Townsend Day, MD

Chief of Breast Imaging
MedStar Union Memorial and MedStar Good Samaritan Hospital

Race and Breast Cancer Surgery: Is There a Health Care Disparity?

Wednesday, September 30, 2020 | 6:00pm to 8:00pm



Survivor Speaker
Desirée A.H. Walker

Breast Surgical Management for the Primary Care Provider: A 20/20 vision



Vivian J. Bea, MD, MBS, FACS
Assistant Professor of Surgery
NewYork-Presbyterian/Weill Cornell Medicine
Chief of Breast Surgical Oncology
NewYork Presbyterian/Brooklyn Methodist Hospital

Breast Plastic Surgical Management



Dorothy W. Bird, MD, MS
Plastic and Reconstructive Surgeon
MD Anderson Cancer Center at Cooper

Breast Plastics Surgical Healthcare Systems and Decision Making



David M. Otterburn, MD, FACS
Associated Professor of Plastic Surgery
Program Director, NewYork-Presbyterian, Plastic Surgery Residency
Weill Cornell Medicine and Columbia University Medical Center

Medical & Radiation Oncology Disparities: Demystified

Thursday, October 1, 2020 | 6:00pm to 8:00pm



Survivor Speaker
Lynn Morris

Breast Cancer Pearls for Primary Care Physicians



Evelyn Taiwo, MD
(Interim) Assistant Professor of Clinical Medical Oncology
NewYork-Presbyterian/Brooklyn Methodist Hospital

The Management of Metastatic Breast Cancer



Kamel Abou-Hussein, MD
Hematologist/Medical Oncologist
MD Anderson Cancer Center at Cooper

Short-Course Breast Radiotherapy: Maximizing Safety and Accessibility for Underserved Patients



Anthony Dragun, MD
Chairman and Chief, Department of Radiation Oncology
MD Anderson Cancer Center at Cooper

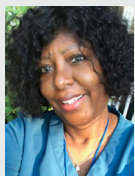
The Tale of Two Cities



Onyinye D. Balogun, MD
Assistant Professor of Clinical Radiation Oncology
NewYork-Presbyterian/Weill Cornell Medicine and Brooklyn Methodist Hospital

Genetics & Survivorship: Fighting for Health Equity

Friday, October 2, 2020 | 6:00pm to 8:00pm



Survivor Speaker
Tonya Shorter

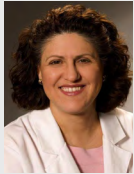
Genetic Ancestry and the DARC side



Melissa Davis, PhD

(Interim) Assistant Professor of Cell and Developmental Biology Scientific Director, International Center for the Study of Breast Cancer Subtypes NewYork-Presbyterian/Weill Cornell Medicine

Genetic Counseling and Testing



Generosa Grana, MD, FACP

Hematologist/Medical Oncologist
Director, MD Anderson Cancer Center at Cooper

Benign and High Risk Breast Disease: A Spectrum of Variety



Lonzetta L. Newman, MD, FACP

Associate Professor of Medicine in the Department of Clinical Cancer Prevention, Division of Cancer Prevention and Population Sciences
The University of Texas MD Anderson Cancer Center

Integrative Breast Health & Wellness

Saturday, October 3, 2020 | 9:00am to 1:00pm

Supporting Shared Decision-Making (SDM) for Breast Cancer Patients



Antonio P. DeRosa, MS, MLIS, AHIP

Program Lead, Decision Navigation and Patient Support
NewYork-Presbyterian/Weill Cornell Medicine Meyer Cancer Center

The Impact of Integrative Medicine on Cancer Care and Survivorship



Pallav Mehta, MD

Assistant Professor of Medicine
Chief, Division of Hematology/Oncology
Director of Integrative Oncology
MD Anderson Cancer Center at Cooper

Spirituality and Religion in Supportive Care for Women with Breast Cancer



Alan Astrow, MD

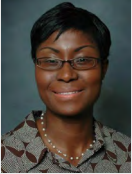
Professor of Clinical Medical Oncology
Chief of Hematology and Medical Oncology
NewYork-Presbyterian/Brooklyn Methodist Hospital

Rehabilitation of the Breast Cancer Patient Through the Cancer Care Continuum



Rohini Kumar, MD
Assistant Professor of Physical Medicine & Rehabilitation
MD Anderson Cancer Center at Cooper

Access to Fertility and Preservation Options



Jewel N. Amui-Bellon, MD
Obstetrician/Gynecologist
Cooper Institute for Reproductive Hormonal Disorders

Survivorship



Evelyn Robles-Rodriguez, DNP, APN
Director, Outreach, Prevention & Survivorship
MD Anderson Cancer Center at Cooper

When A Physician is A Breast Cancer Patient What I Experienced and Learned as a Patient and Survivor



Alexea Gaffney, MD
Internal Medicine, Infectious Disease
Stony Brook Medicine
Stony Brook Medical Associates
A location of Stony Brook Internists

The Need for Health Equity Through the Lens of Breast Cancer Survivors

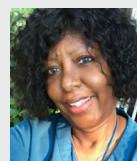
Breast Cancer Survivor Panelist Discussion



Diamonique Valentine



Desirée A.H. Walker



Tonya Shorter



Lynn Morris

Accreditation & Credit Designation

This activity has been planned and implemented in accordance with the accreditation requirements and policies of the Accreditation Council for Continuing Medical Education (ACCME) through the joint providership of Weill Cornell Medical College and MD Anderson Cancer Center at Cooper. Weill Cornell Medical College is accredited by the ACCME to provide continuing medical education for physicians.

Weill Cornell Medical College designates this live activity for a maximum of **14** *AMA PRA Category 1 Credit(s)*[™]. Physicians should claim only the credit commensurate with the extent of their participation in the activity.

Evaluation

An evaluation form will be emailed to you upon completion of the course. In order to receive CME credit, you must complete the online evaluation form by November 1st, 2020. You should claim only the credit commensurate with the extent of your participation. Completion of the Evaluation form will allow us to assess the degree to which the activity met its objectives. It will also guide the planning of future activities and inform decisions about improving the educational program.

Disclosure Policy

It is the policy of Weill Cornell Medical College to adhere to ACCME Criteria, Policies, and Standards for Commercial Support and content validation in order to ensure fair balance, independence, objectivity, and scientific rigor in all its sponsored activities. All speakers, Course Directors, Co-Course Directors, planners, reviewers, and staff members participating in sponsored activities are expected to disclose relevant financial relationships pertaining to their contribution to the activity. Relationship information is analyzed to determine whether conflicts of interest exist. All conflicts of interest are resolved prior to participation in the planning or implementation of this activity. Presenters and authors are also expected to disclose any discussion of (1) offlabel or investigational uses of FDA approved commercial products or devices or (2) products or devices not yet approved in the United States. All disclosures will be made at the time of this CME activity.

Course Directors

Vivian J. Bea, MD, MBS, FACS

Assistant Professor of Surgery
New York-Presbyterian/Weill Cornell Medicine
Chief of Breast Surgical Oncology
New York Presbyterian/Brooklyn Methodist Hospital

Evelyn Robles-Rodriguez, DNP, APN

Director, Outreach, Prevention & Survivorship
MD Anderson Cancer Center at Cooper

Planning Committee

Vivian J. Bea, MD, MBS, FACS

Assistant Professor of Surgery
New York-Presbyterian/Weill Cornell Medicine
Chief of Breast Surgical Oncology
New York Presbyterian/Brooklyn Methodist Hospital

Evelyn Robles-Rodriguez, DNP, APN

Director, Outreach, Prevention & Survivorship
MD Anderson Cancer Center at Cooper

Erica Phillips, MD MS

Associate Professor of Clinical Medicine
Associate Director of Community Outreach and Engagement
New York-Presbyterian/Weill Cornell Medicine Meyer Cancer Center

Kamel Abou-Hussein, MD

Hematologist/Medical Oncologist
MD Anderson Cancer Center at Cooper

Noralie Nuñez

Outreach Coordinator
Department of Breast Surgery
Weill Cornell Medicine