



Weill Cornell Medicine Breast Surgery

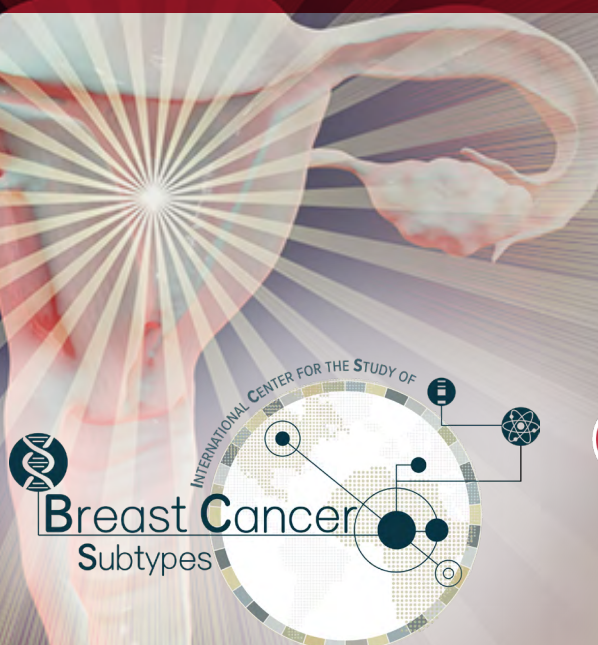
INTERNATIONAL CENTER FOR THE STUDY OF BREAST CANCER SUBTYPES
(ICSBSCS) PRESENTS THE 6TH ANNUAL INTERNATIONAL SYMPOSIUM

IMPROVING BREAST AND GYNECOLOGICAL CANCERS MANAGEMENT & OUTCOMES IN LOW AND MIDDLE-INCOME COUNTRIES (LMIC)

September 5 & 6, 2022
(Practical Sessions at KATH)

September 7 & 8, 2022
(Scientific Presentations at LKC)

9:00 AM – 5:00 PM DAILY
Lancaster Kumasi City (formerly Golden Tulip)



Register Now



National Institutes of Health
Turning Discovery Into Health

AKWAABA

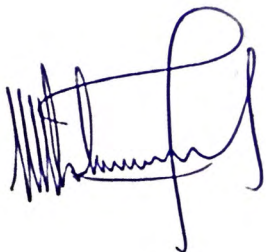
Dear Colleagues and Friends:

On behalf of the Weill Cornell Medicine (WCM) and Komfo Anokye Teaching Hospital (KATH), we are honored and pleased to welcome you to the International Center for the Study of Breast Cancer Subtypes (ICSBCS) 6th annual symposium being held in Kumasi, Ghana.

The theme for our symposium is **“Improving Breast & Gynecological Cancers Management and Outcomes in Low- and Middle-Income Countries (LMIC)”**. We aim to achieve this goal through robust multidisciplinary discussion and interaction, as well as through enhanced collaboration between the oncology professionals that are affiliated with the ICSBCS network. The mission of the ICSBCS is to reduce the global breast and gynecological cancer burden through advances in research and delivery of care to diverse populations worldwide. Through research programs such as our “International Breast Registry”, the ICSBCS improves insights regarding the biology of breast and gynecological cancers in diverse populations. Through educational projects such as our immunohistochemistry (IHC) training program and through clinical efforts such as our telemedicine tumor board conferences, the ICSBCS strengthens resources that are available for direct patient care.

We are truly grateful for the dedication and devotion that our colleagues have provided in order to make this dynamic symposium a reality. We would like to thank the leadership of the WCM, specifically Prof. Fabrizio Michelassi, Surgeon-in-Chief, WCM Department of Surgery, and Dr. Oheneba Owusu-Danso CEO of Komfo Anokye Teaching Hospital, for supporting this important international symposium and allowing us to coordinate its ambitious program content. We also deeply appreciate support from National Cancer Institute (NCI) grant. We are extremely excited about the presentations and workshop that will take place here in Kumasi over the next four days, and we enthusiastically look forward to the productivity of the enhanced multidisciplinary, international partnerships that will emerge as a consequence of the activities during our time together.

Yours sincerely,



Dr. Ishmael Kyei
Co-Chair Planning Committee



Dr. Kofi K. Gyan
Co-Chair Planning Committee

SYMPOSIUM WORKSHOPS

September 5, 2022 & September 6, 2022

GENOMICS:

- Bioinformatics
- Genomics Data Management
- DNA/RNA extraction methods from Saliva and FFPE samples

PATHOLOGY:

- Interpretation of breast core biopsies
- Quality control in biopsy evaluation
- Uses of Cell Blocks for IHC
- Use of SLN & FNAC

PLASTIC SURGERY:

- Immediate Vs Delayed Post-Mastectomy Breast Reconstruction
- Pedicled Autologous Flap Reconstruction Techniques
- Implant Reconstruction Techniques

RADIATION ONCOLOGY:

- Whole and Partial Breast Imaging and Planning for Radiotherapy
- Cervical Cancer Imaging and Planning: What every doctor must know

RADIOLOGY:

- Ultrasound-Guided Breast Biopsy Techniques
- Breast Imaging

SURGERY:

- Core Needle Biopsy Training
- Live Surgery Focusing on Mastectomy
- Axillary Dissection and Clearance - Breast Conservation

DAY ONE

Wednesday, September 7, 2022

8:00 AM – 9:00 AM	Registration
9:00 AM – 9:10 AM	Introductions of Invited Dignitaries
9:10 AM – 9:15 AM	Welcome & Opening Remarks Prof. Lisa A. Newman, MD, MPH, FACS <i>Chief, Division of Breast Surgery</i> <i>Director, Interdisciplinary Breast Program</i> <i>Medical Director, Int'l Center for the Study of Breast Cancer Subtypes</i> <i>Weill Cornell Medicine/NewYork-Presbyterian Hospital Network</i> <i>2nd Vice President, American College of Surgeons</i>
9:15 AM – 9:30 AM	Welcome & Opening Address Dr. Oheneba Owusu-Danso, MD <i>Chief Executive Officer, Komfo Anokye Teaching Hospital, Kumasi – GHANA</i>
9:30 AM – 9:45 AM	Address by Special Guest of Honor His Royal Majesty Otumfuo Nana Osei Tutu II <i>Asantehene, Manhyia Palace, Kumasi – GHANA</i>
9:45 AM – 10:15 AM	Group Photograph

PUBLIC HEALTH EPIDEMIOLOGY

- 10:15 AM – 10:35 AM **Overview of Breast Cancer in Ghana**
Dr. Ishmael Kyei
Directorate of Surgery, Komfo Anokye Teaching Hospital, Kumasi, GHANA
- 10:35 AM – 10:55 AM **Overview of Gynecological Cancers in Ghana**
Dr. Thomas Konney
Head, Directorate of Gynecological Oncology, Komfo Anokye Teaching Hospital, Kumasi, GHANA
- 10:55 AM – 11:15 AM **Overview of Breast Cancer in Nigeria**
Prof. Emmanuel R. Ezeome, MD, MA FWACS, FACS
Professor of Surgery, University of Nigeria Teaching Hospital, College of Medicine, University of Nigeria, Nsukka
- 11:15 AM – 11:30 AM **Coffee, Tea, Cocoa & Snack Break**
- 11:30 AM – 11:50 AM **Overview of Gynecological Cancers in Nigeria**
Dr. Uchenna Anthony Umeh
Senior Lecturer/Honorary Consultant, Department of Obstetrics & Gynecology, University of Nigeria, Nsukka College of Medicine, Enugu, NIGERIA
- 11:50 AM – 12:10 PM **Overview of Breast & Gynecological Cancers in Ethiopia**
Prof. Mahteme Bekele Muleta
Director, Directorate of Research and Development, St. Paul's Hospital Millennium Medical College, Addis Ababa, ETHIOPIA
- 12:10 PM – 12:30 PM **Overview of Breast & Gynecological Cancers in Kenya**
Prof. Miriam Mutebi, MD
Department of Surgery, Aga Khan University Teaching Hospital, Nairobi, KENYA
- 12:30 PM – 1:30 PM **Lunch Break**
- 1:30 PM – 1:50 PM **Overview of Breast & Gynecological Cancers in Sudan**
Dr. Rehab Abdellah Osman Ahmed, MBBS
Clinical Oncologist, Khartoum Oncology Hospital, Federal Ministry of Health, Khartoum, SUDAN
- 1:50 PM – 2:10 PM **Overview of Breast & Gynecological Cancers in South Africa**
Prof. Zodwa Dlamini, PhD
Professor of Molecular Oncology, University of Pretoria, Pretoria, SOUTH AFRICA
- 2:10 PM – 2:30 PM **Overview of Breast & Gynecological Cancers in Zambia**
Dr. Musalwa Muyangwa-Senenova
University of Zambia School of Medicine, Department of Physiological Sciences, Lusaka, ZAMBIA
- 2:30 PM – 2:50 PM **Overview of Breast & Gynecological Cancers in Antigua & Barbuda**
Dr. Albert Duncan
Medical Director, Mount St. John Medical Center, St. John, ANTIGUA & BARBUDA
- 2:50 PM – 3:10 PM **Overview of Breast Cancer in Uganda**
Dr. Hawa Nalwoga, MBChB, M Med. Path, PhD, FCPATH (ECSA)
Department of Pathology, Makerere University/Mulago National Referral Hospital, Kampala, UGANDA
- 3:10 PM – 3:30 PM **Overview of Gynecological Cancer in Uganda**
Dr. Samuel Kalungi, MBChB, M Med. Path, PhD, FCPATH (ECSA)
Department of Pathology, Makerere University/Mulago National Referral Hospital, Kampala, UGANDA
- 3:30 PM – 4:30 PM **Questions and Answers**

DAY TWO

Thursday, September 8, 2022

8:00 AM – 9:00 AM **Registration Continues**

9:00 AM – 9:10 AM **Welcome & Overview Remarks from Day One**

Prof. Lisa A. Newman, MD, MPH, FACS

Chief, Division of Breast Surgery

Director, Interdisciplinary Breast Program

Medical Director, Int'l Center for the Study of Breast Cancer Subtypes

Weill Cornell Medicine/NewYork-Presbyterian Hospital Network

2nd Vice President, American College of Surgeons

SURGERY

9:10 AM – 9:30 AM **Surgical Management of Early Stage Breast Cancer**

Dr. Jessica M. Bensenhaver, MD, MS, FACS

Director, Breast Oncology Program, Henry Ford Health,

Henry Ford Cancer Institute, Detroit, MICHIGAN – USA

9:30 AM – 9:50 AM **The Role of Surgery in Managing Locally Advanced Breast Cancer**

Dr. Vivian J. Bea, MD, FACS

Chief, Division of Breast Surgery, NewYork-Presbyterian Brooklyn Methodist Hospital

Weill Cornell Medicine/Weill Cornell Medical College of Cornell University, Brooklyn, NEW YORK – USA

9:50 AM – 10:10 AM **The Role of Plastic Surgery in the Management of Breast Cancer**

Prof. Adeyiza O. Momoh, MD

Professor of Plastic Surgery, University of Michigan Medical School/Michigan Medicine,

Ann Arbor, MICHIGAN – USA

PATHOLOGY

10:10 AM – 10:30 AM **Processing of Breast Tissue for Optimal H&E, IHC and RNA/DNA Extraction and Sequencing**

Dr. Ernest K. Adjei

Head, Laboratory Services Directorate, Komfo Anokye Teaching Hospital, Kumasi – GHANA

10:30 AM – 11:00 AM **Coffee, Tea, Cocoa & Snack Break**

11:00 AM – 11:20 AM **Mimics and Low-grade Variants of Malignancy in Breast Pathology: Emphasizing Morphologic Clues**

Prof. Paula S. Ginter

Professor of Pathology & Laboratory Medicine, Breast Pathology,

New York University – Langone Hospital, Long Island, NEW YORK – USA

RADIOLOGY

11:20 AM – 11:40 AM **Breast Cancer Imaging in Low Resource Settings**

Prof. Jeffrey S. Reiner

Associate Attending Radiologist, Memorial Sloan Kettering Cancer Center

Associate Professor of Clinical Radiology, Weill Cornell Medicine, New York, NEW YORK – USA

ONCOLOGY

- 11:40 AM – 12:00 PM **Systemic Therapy**
Dr. Evelyn (Toyin) Taiwo, MD
*Attending Physician, Hematology and Oncology, NewYork-Presbyterian Brooklyn Methodist Hospital
Professor of Clinical Medicine, Weill Cornell Medical College of Cornell University*
- 12:00 PM – 12:20 PM **Benefits of Radiotherapy in Early Stage of Breast Cancer**
Prof. Onyinye D. Balogun
*Professor of Clinical Radiation Oncology, Department of Radiation Oncology
Weill Cornell Medicine/Weill Cornell Medical College of Cornell University, New York, NEW YORK – USA*
- 12:20 PM – 12:40 PM **Radiotherapy for Locally Advanced Breast Cancer**
Prof. Allison Garda
*Professor of Radiation Oncology, Mayo Clinic College of Medicine and Science
Department of Radiation Oncology, Mayo Clinic, Rochester, MINNESOTA – USA*
- 12:40 PM – 1:40 PM **Lunch Break**
- 1:40 PM – 2:00 PM **The Role of Radiation Therapy in the Treatment of GYN Neoplasms**
Dr. Eleanor Walker, MD
*Henry Ford Cancer Institute/Wayne State University School of Medicine,
Department of Radiation Oncology, Detroit, MICHIGAN – USA*

PALLIATION & INTEGRATIVE SERVICES

- 2:00 PM – 2:20 PM **Palliative Care of Breast Cancer**
Dr. Evelyn (Toyin) Taiwo, MD
*Attending Physician, Hematology and Oncology, NewYork-Presbyterian Brooklyn Methodist Hospital
Prof. of Clinical Medicine, Weill Cornell Medical College*

KEYNOTE SESSION ADDRESS

TRANSLATIONAL GENOMICS/PRECISION MEDICINE

- 2:20 PM – 2:50 PM **The Role of African Ancestry in Global Cancer Research**
Prof. Melissa B. Davis
*Scientific Director, Int'l Center for the Study of Breast Cancer Subtypes,
Weill Cornell Medicine/Weill Cornell Medical College of Cornell University, New York, NEW YORK – USA*
- 2:50 PM – 3:20 PM **Advancing Translational Genomics and Precision Medicine**
Prof. John D. Carpten, Ph.D.
*Professor and Chair, Translational Genomics/Precision Medicine
University of Southern California, Los Angeles, CALIFORNIA – USA*
- 3:20 PM – 4:20 PM **Multidisciplinary Round Table Discussion of Selected Breast & Gynecological Cancer Cases – Tumor Board Style**
- 4:20 PM – 4:35 PM **Closing Remarks**
Dr. Joseph K. Oppong
Head, Directorate of Surgery, Komfo Anokye Teaching Hospital
Prof. Lisa A. Newman, MD, MPH, FACS
*Director, Interdisciplinary Breast Program
Medical Director, Int'l Center for the Study of Breast Cancer Subtypes
Weill Cornell Medicine/NewYork-Presbyterian Hospital Network
2nd Vice President, American College of Surgeons*
- 5:00 PM **Relaxation, Networking & Continue the Conversation!**

PRESENTERS BIOGRAPHIES



Dr. Ernest Kwasi Adjei (Presenter & Workshop Facilitator) is a consultant pathologist at the Komfo Anokye Teaching Hospital (KATH), Kumasi, Ghana. He is currently the Head of Directorate of the Laboratory Services Directorate, KATH. He received his medical education at the Kwame Nkrumah University of Science and Technology (KNUST) school of Medical Sciences (SMS) in Kumasi Ghana, in 2003. He later completed his specialist training at the University Hospital of North Norway (UNN), Tromsø, in Norway in 2010. He is a Fellow of the Royal College of Pathologist in London, UK. He also has subspecialty training in uropathology, gynaepathology and forensic pathology from USA and South Africa respectively. He has membership with various professional associations, the major ones being Ghana Medical Association,

Royal College of pathologists and African Society of Forensic Medicine (ASFM). He was a lecturer at KNUST-SMS from 2010 to 2016. He has special interest in breast pathology and have some peer-reviewed publications in this area.



Dr. Rehab Abdellah Osman Ahmed, MBBS (Presenter) is a Clinical Oncologist at the Radioisotope Center Khartoum (RICK). Dr. Ahmed graduated from Khartoum University Medical School in 2000. From April through September of 2001, she did internship in Obstetrics & Gynecology and Pediatrics at Shendi Teaching Hospital. Then from January through November 2002 she another internship in General Surgery, Orthopedics and Internal Medicine at the Omdurman Teaching Hospital. She also did her one year National Service from April 2003 to May 2004 at the Omdurman Military Hospital. She has worked in several capacities in the health care systems in Sudan. She is involved in MDT of the gastrointestinal tract malignancies.



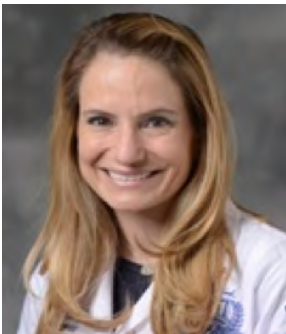
Prof. Onyinye Balogun, MD (Presenter & Workshop Facilitator) is an Assistant Professor of Radiation Oncology at Weill Cornell Medicine specializing in the treatment of breast and gastrointestinal malignancies. She is a graduate of Harvard University and Yale University School of Medicine. Dr. Balogun initiated her residency training at the University of Chicago and completed her final year at New York University. She has conducted and published breast cancer research in novel therapeutics for triple negative breast cancer and brain metastases. She is also engaged in hepatocellular cancer research as well as global health activities with a focus on improving the delivery of radiation therapy in low- and middle-income countries. In radiation oncology, there is often a lot of emphasis on the technologies

that a department possesses. At Weill Cornell Medicine, I deliver compassionate and personalized care to patients using the latest technologies not only in radiation oncology but all aspects of their care. Our multidisciplinary approach and collaboration across all disciplines (surgery, medical oncology, and radiation oncology) ensures that the treatment plan meets the unique needs (health, emotional, spiritual) of each individual patient. It is also important to me that each person feels empowered and informed throughout their treatment and for the duration of our relationship. I am fortunate to work in an environment where my patients and I can flourish.



Prof. Vivian J. Bea, MD, FACS (Presenter & Workshop Facilitator) is a board certified breast surgical oncologist, was recently named section chief of breast surgical oncology at NewYork-Presbyterian Brooklyn Methodist Hospital. She also serves as assistant professor of surgery at Weill Cornell Medicine. She is a breast disparities researcher, educator, community outreach leader, entrepreneur, and best-selling children's book author. Dr. Bea attended Morehouse School of Medicine whose mission was to serve the underserved. After her matriculation from Morehouse, Dr. Bea continued to the Medical University of South Carolina General Surgery Residency training program in Charleston, SC. Dr. Bea was then awarded the highly coveted Breast Surgical Oncology fellowship position at the UT MD Anderson Cancer

Center in Houston, TX. She then served as a breast surgical oncologist in the division of breast surgery at MD Anderson Cancer Center at Cooper in Camden, NJ where she chaired the Inflammatory Breast Cancer Program. Dr. Bea's primary research efforts have focused on modifiable risk factors and outcomes in ethnic populations. In the community, her primary initiative has been to bridge the gap between multidisciplinary breast cancer treatment and community barriers.



Dr. Jessica M. Bensenhaver, MD, MS (Presenter) is a surgical breast oncologist and the Director of the Breast Oncology Program for Henry Ford Health multi-hospital system in metropolitan Detroit, Michigan. She received her undergraduate degree from James Madison University in Virginia and her medical degree from Marshall University Joan C. Edwards School of Medicine. She then completed a surgical residency at West Virginia University Charleston Division, followed by a fellowship in breast oncology at the University of Michigan. She completed a Master of Science Degree in Clinical Research Design and Statistical Analysis at the University of Michigan School of Public Health. At Henry Ford Health, in addition to Director of the Breast Oncology Program, she serves as the Director of the Multidisciplinary

Breast Oncology Fellowship, the Research Director of the International Center for the Study of Breast Cancer Subtypes (ICSBCS) and is the Institutional PI for the Alliance for Clinical Trials Group. She specializes in benign and malignant breast diseases. Her research focuses on breast cancer disparities and has featured outreach breast health programs in both Africa and Haiti.



Prof. John D. Carpten, MD (Presenter & Workshop Facilitator) currently serves as Professor and Chair for the Department of Translational Genomics, and Director of the Institute for Translational Genomics, Keck School of Medicine, University of Southern California. Previously he was Professor and Deputy Director of Basic Sciences at the Translational Genomics Research Institute (TGen), Phoenix, AZ. Dr. Carpten's expertise spans a very broad range of research disciplines including germline genetics, tumor profiling, cancer cell biology, functional genomics, and health disparities. The primary goal of Dr. Carpten's research program is to discover molecular alterations in cancer and to translate these findings into new approaches for prevention, diagnosis and treatment. In support of this goal, his program is

actively involved in the development and application of cutting-edge technologies and novel bioinformatics approaches for discovery research. His work has impacted our understanding of a variety of cancer types including prostate cancer, breast cancer, colon cancer, brain cancer, multiple myeloma, and pediatric cancers. Dr. Carpten has co-authored over 190 publications in scientific journals that include Science, Nature, Nature Genetics, Cancer Cell, Cancer Research, Molecular Cancer Therapeutics, and the New England Journal of Medicine. He was named a Science Trailblazer by Spectrum Magazine in 2006 and was awarded Susan G. Komen Distinguished Lectureship on the Science of Cancer Health Disparities in 2014 for his untiring work in ensuring that all people are equally represented in science and innovative healthcare. Dr. Carpten was also awarded the 2018 AACR MICR Jane Cooke Wright Lectureship for his outstanding research in cancer disparities and his efforts in developing the careers of minority scientists. It is his hope that this work will one day lead to improvements in knowledge-based therapeutics toward improvements in outcomes for cancer patients.



Prof. Melissa B. Davis, PhD (Presenter & Workshop Facilitator) Melissa B. Davis, PhD is an Assistant Professor (Interim) of the Department of Surgery and Scientific Director of the International Center for the Study of Breast Cancer Subtypes at Weill Cornell Medicine in New York, NY. She holds adjunct faculty appointments in the Department of Genetics at the University of Georgia in Athens, GA and in the Department of Population Health Sciences at Henry Ford Health System in Detroit, MI. Dr. Davis received her Ph.D. in Molecular Genetics at the University of Georgia (Athens, GA, USA) where she completed groundbreaking work in steroid hormone functions related to developmental biology. Following this, she completed Postdoctoral Fellowships in Functional Genomics and Systems Biology

in Departments of Human Genetics at Yale School of Medicine (New Haven, CT, USA) and the University of Chicago, where she also trained at the U-Chicago Center for Interdisciplinary Health Disparities. This final stop in her training is where she began work in her current research interest: To identify biological mechanisms of racial disparities in cancer risk and clinical outcomes of cancer diagnoses. The Davis lab has produced findings that have proven that unique genetic signatures in both breast and prostate tumors of African and African American patients are enriched for mechanisms that correlate with aggressive tumor progression, which generate novel opportunities for precision medicine applications in minority populations. Her current work builds upon findings in her breast cancer research, where she has identified that an African-Ancestry allele, and the recently discovered tumor expression, of a gene named DARC (ACKR1) is linked to the tumor-specific immune/inflammatory response. Emerging findings of this project indicate that unique immune response in tumors of African Americans may be linked to worse clinical outcomes yet hold the potential for novel targeted therapies.



Prof. Zodwa Dlamini (Presenter) is the Founding Director and Executive Head of the Pan African Cancer Research Institute (PACRI) and a Professor of Molecular Oncology at University of Pretoria (UP) in South Africa. She is the Scientific Director of the South African Medical Research Council (SAMRC) Precision Oncology Research Unit (PORU). She is the DSI/NRF SARChI Chair in Precision Oncology and Cancer Prevention (POCP). She is a member of the American Association for Cancer Research (AACR) Advisory Group on Sub-Saharan Africa (Philadelphia, USA). She is a member of the AACR Pathology Resources in Africa Advisory Group (Philadelphia, USA). She is the Chairperson of the Health Research Organisation (AHRO) Scientific Advisory Board (Glasgow, Scotland, UK). She is a distinguished member of the Council for Scientific

Advisers (CSA) (Trieste, Italy). She is an elected member of the Academy of Science of South Africa (ASSAf), for significant achievement in the pursuit, advancement or application of science. Professor Dlamini is an overseas Fellow of the Royal Society of Medicine (RSM), an elite group of physicians or scientists elected to the Royal Society of Medicine following nomination and committee review. Professor Dlamini is the recipient of the SAMRC Silver Award, as an outstanding South African Scientist who has contributed to raising the profile of Science in South Africa. She also serves on the DSI/SAMRC National Genomics and Precision Medicine Think Tank. She is the Associate Editor for *Frontiers in Oncology: Cancer Genetics*.



Dr. Albert Duncan, MD, FACS (Presenter) is a General and Acute Care Surgeon with special interest in Diseases of the Breast. He was a Clinical Associate Professor and Chief of General Surgery at the State University of New York (SUNY) Down State Medical Centre. Prior to that he was the Chairman of Surgery at the Brooklyn Hospital from 1997 – 2001. Presently he is the Medical Director of the Sir Lester Bird Medical Centre (formerly known as Mount St. John's Medical Centre). He is a graduate of The Medical College of Ohio at Toledo (Toledo University) and completed his residency training in General Surgery and fellowship in Trauma Critical Care at SUNY and Kings County Medical Centre. Dr. Duncan has dedicated most of his general surgery practice to the care of patients with breast disease. He was one of the early members

of the Society of Breast Surgeons (Certificate #494). His interest continued in his present position at the Sir Lester Bird Medical Center evidenced by hosting two International Breast Symposia and multiple outreach and educational programs in Antigua and Barbuda. Presently he serves as the PI for the ICBCS Research Program in Antigua and Barbuda along with other OECS patients treated by Sir Lester Bird Medical Centre.



Prof. Emmanuel R. Ezeome MB; BS, MA Bioethics, FWACS, FACS (Presenter) is the Director of the Oncology Center and the Head, General Surgery Division, University of Nigeria Teaching Hospital, Enugu, Nigeria. A Professor of Surgery at the College of Medicine, University of Nigeria Enugu and a Consultant Surgical Oncologist with the University of Nigeria Teaching Hospital Enugu, Dr Ezeome has in the past been the Associate Dean of the Faculty of Medical Sciences, University of Nigeria Nsukka. His medical education was at the University of Nigeria Medical School, and the Surgery Residency program of the University College Hospital Ibadan, Nigeria. He holds a Masters degree in Bioethics from Case Western Reserve University, Cleveland, Ohio. He was an International Guest Scholar of the American College of Surgeons, an ICRETI grant recipient and Fogarty Fellow in Bioethics. Dr. Ezeome was the Chairman and Chief Examiners in Surgery, West African College of Surgery from

2015 to 2019 and currently is the 2nd Vice President, West African College of Surgeons. In his role as the Director of the Oncology Center of the University of Nigeria Teaching Hospital, he has pioneered the development of the first multidisciplinary comprehensive cancer treatment facility in Nigeria and the development of the Enugu Population based Cancer Registry. He is a member of the Nigerian national system of Cancer Registries and also the National Steering Committee of the 2nd Nigerian Cancer Control plan.



Prof. Allison Garda, MD (Presenter & Workshop Facilitator) Dr. Allison Garda is a Senior Associate Consultant and Assistant Professor in the Department of Radiation Oncology at Mayo Clinic in Rochester, MN. She received her medical degree from the University of Virginia in Charlottesville, Virginia and completed Radiation Oncology residency at Mayo Clinic in Rochester, Minnesota. Her clinical focus is on the treatment of gynecologic and breast malignancies. Her research focuses on quality of life during radiotherapy, survivorship, biomarkers for risk stratification and individualized treatment, novel treatment strategies including advanced radiotherapy modalities, and radiation oncology inclusion in the medical school curricula. She is passionate about education, including medical education, global oncology, and patient education. She is a member of the NRG cervix and vulva subcommittee, serves as Assistant Program Director for the Mayo Clinic Radiation Oncology

residency program, chairs the Mayo Clinic Radiation Oncology Patient Education Committee, and is a participant in the American Society for Clinical Oncology (ASCO) Education Scholars Program.



Prof. Paula Ginter, MD (Presenter & Workshop Facilitator) is a board certified Anatomic and Clinical pathologist with a subspecialty interest in breast pathology. Her research interests are focused on the pathogenesis, diagnosis, and treatment of breast malignancies. Along with clinical responsibilities and research pursuits, Dr. Ginter is actively involved in resident and medical student education. Prior to joining the faculty of the Department of Pathology and Laboratory Medicine, Dr. Ginter completed residency training in Anatomic and Clinical Pathology at NewYork-Presbyterian Hospital/Weill Cornell Medical Center, where she served as Chief Resident. She subsequently pursued subspecialty fellowship training in breast pathology at Weill Cornell under leading breast pathologists.



Dr. Sam Kalungi, MB ChB, M Med. Path, PhD, FCPATH (ECSA) (Presenter) completed undergraduate training in Makerere University Medical School (now Makerere University College of Health Sciences) in 2000. In 2004 he completed his Master's degree in Pathology in Makerere University College of Health Sciences. He completed in PhD in the University of Bergen, Norway in 2011. Dr. Kalungi has worked in Mbale hospital located in the Eastern Part of Uganda; Ngora Freda Carr hospital and Jinja Hospital. He is currently working in Mulago National referral hospital as a Senior Consultant pathologist and the head of clinical laboratories in Mulago Hospital. Dr. Kalungi is an associate consultant with Uganda Cancer Institute in Kampala, Uganda. Dr. Kalungi also works as a part time lecturer/specialist pathologist in Makerere University College of Health Sciences, Department of Pathology and in Busitema University Faculty of Health Sciences. He has worked as an external examiner in

a number of medical schools in Uganda. He has published a number of articles in scientific journals, including research articles on Breast Cancer. He continues to supervise research for a number of graduate students. He is a member of the steering committee for the development of Breast Health guidelines in Uganda. Dr. Kalungi has attended the ICBCS since 2017 and is one of the co-investigators in the Uganda site.



Dr. Thomas Konney, MD (Presenter) is a Fellow of the Ghana College as well as the West African College of Surgeons. He is an Honorary Consultant, Gynaecological Oncologist, Komfo Anokye Teaching Hospital and a Senior Lecturer, School of Medicine and Dentistry, Kwame Nkrumah University of Science and Technology. His principal area of clinical practice relates to advanced gynaecological cancers. He was on the American Society of Clinical Oncology (ASCO) expert panel for the development resource- stratified ovarian cancer guidelines, as well as on cervical cancer treatment guidelines with Kumasi City Cancer Challenge C/CAN and the NCCN Harmonised cervical, ovarian, vulva cancer treatment guidelines for sub-Saharan Africa with the Africa Cancer Coalition Dr. Konney's additional activities include provision of obstetric and gynaecologic services, teaching, supervision and mentorship for undergraduate medical students, and residents for Membership and Fellowship programmes with the Ghana College of Physicians and Surgeons as well as the West African College of Surgeons.



Dr. Ishmael Kyei, MB ChB, FWACS, FGCS (Presenter) is a General Surgeon/Breast Surgeon and a Senior Lecturer with the Department of Surgery, College of Health Sciences of the Kwame Nkrumah University of Science and Technology and the Komfo Anokye Teaching Hospital. He received his undergraduate training from the School of Medicine and Dentistry KNUST, He holds a Fellowship in General Surgery with both the Ghana and the West African College of Surgeons. He has received some training in Breast Cancer Management at the Weill Cornell Medicine NY. His research interest is Breast Cancer in African women and has co-authored over 30 peer reviewed articles spanning areas in General Surgery and Breast Cancer. He was on the expert panel for the development of the Breast Cancer guidelines for the Kumasi City Cancer challenge C/CAN. He is a member of the Breast Society of Ghana and the American Society of Clinical Oncology.



Prof. Adeyiza O. Momoh, MD (Presenter & Workshop Facilitator) is an Associate Professor of Surgery at the University of Michigan in Ann Arbor. He received his medical degree from Northwestern University in Chicago and completed his surgical training at the Baylor College of Medicine in Houston. He subsequently went through fellowship training in microsurgery at the Beth Israel Deaconess Medical Center of Harvard University. He specializes in breast reconstruction and microsurgery. His research interests are in optimizing outcomes of breast reconstruction and more recently, the role of breast reconstruction in global surgery. He has published over 60 papers in peer-reviewed journals and presents regularly at national surgical meetings. As an educator, he has won multiple teaching awards for his work in training plastic surgery residents. He currently serves as the program director for one of the top ranked plastic surgery training programs in the United States.



Prof. Mahteme Bekele Muleta, MD (Presenter) attended his undergraduate medical education and postgraduate general surgery training at Addis Ababa University, College of Health Science, and School of Medicine. He graduated in January 2011 as general surgeon and served the rural part of the country. He joined St. Paul's Hospital Millennium Medical College in 2012; Dr. Bekele is a compassionate and respectful surgeon who is always trying to bring quality improvement in all areas of surgical care in the country. He is actively engaged in clinical service, breast cancer care and research. Dr. Bekele is serving the college as research Directorate Director since 2018 and the executive member of surgical society of Ethiopia.



Prof. Miriam Mutebi, MD, MMed, MSc. (Presenter) is a breast surgical oncologist from Kenya. She did her general surgery residency at the Aga Khan University Hospital in Nairobi, Kenya. She subsequently did a two-year fellowship in Breast Surgical Oncology, which included a year in the plastics and reconstruction unit at the University of Cape Town, Groote Schuur Hospital in South Africa. She then worked for two years as a graduate surgical oncology fellow at Memorial Sloan Kettering Cancer Centre, New York and completed a Masters in Clinical Epidemiology at Weill Cornell University, New York. She is currently faculty at the Aga Khan University in Nairobi where she is employed as a consultant breast surgical oncologist and a clinical epidemiologist and health systems researcher and is the chair for surgical research. Her research focus is on understanding the barriers to the diagnosis, treatment

and follow up, for women with cancers in sub-Saharan Africa, and in designing interventions to mitigate these barriers.

She is the vice president of East Africa of the African Organisation for Research and Training in Cancer (AORTIC) and a member of the Education and Training committee, AORTIC. She is a council member of the Kenya Society of Haematology and Oncology (KESHO) and a regional lead for UICC. She is the co-founder of the Pan African women's association of surgeons that aims to provide mentorship and support for women in surgery, and to highlight and advocate to improve women's health and surgical health care on the continent (PAWAS - www.africanwomensurgeons.org). She is currently pursuing a pilot's license to extend breast care services to marginalised areas.



Dr. Musalwa Muyangwa-Senenova, MD (Presenter) is a Lecturer/ Researcher in the School of Medicine in the University of Zambia. She received her BSc and MSc in Genetics, and her PhD in Biochemistry from Kazan Federal University. Her research interests' include identification of cancer biomarkers for risk assessment and treatment in African populations, and development of novel cancer treatment strategies in low to middle income countries.



Prof. Hawa Nalwoga, MB ChB, M Med. Path, PhD, FCPATH (ECSA) (Presenter) is an Associate Professor and a Consultant Pathologist who has been involved in teaching, diagnostics and research at different Ugandan medical schools such as Makerere University College of Health Sciences, Mbarara University of Science and Technology, Kampala International University Teaching Hospital, Habib Medical School, and Islamic University in Uganda, for the last 14 years. Skilled in Breast Pathology as well as Breast Cancer research, she is involved in searching for molecular biomarkers in both African and Caucasian breast cancer. Through collaborative research projects with University of Bergen in Norway, she established a TMA database on about 220 African breast cancer series of Ugandan patients.

Dr. Nalwoga's current interests are centred on cutting-edge innovative translational research in genomic analyses in tumour-microenvironment interactions, angiogenesis, and mechanisms of tumorigenesis and metastasis in triple negative breast cancer (TNBC). Dr. Nalwoga obtained a PhD at University of Bergen, Norway in 2010, which was in addition to Master of Medicine (Pathology) and Bachelor's degree in Medicine from Makerere University, Uganda. She is one of the founding members of the College of Pathologists of East, Central, and Southern Africa. Professional bodies to which Dr. Nalwoga is affiliated include International Academy of Pathologists (IAP), East African Division of the International Academy of Pathologists, College of Association of Pathologists of East, Central and Southern Africa (APECSA), and Association of Pathologists of Uganda. She has co-authored in several articles on breast cancer, including the Breast Cancer Treatment Guidelines for Uganda, in peer-reviewed journals and has peer-reviewed scientific articles for PLOS ONE journal, African Health Sciences journal and East and Central African Journal of Surgery, year 2014/15.



Prof. Lisa Newman, MD, MPH, FACS (Workshop Facilitator) is a surgical oncologist and with a clinical and research practice dedicated to breast cancer management. In August 2018 she was appointed Chief of the Section of Breast Surgery at NewYork-Presbyterian/Weill Cornell Medical Center and Weill Cornell Medicine. In addition, at the NewYork-Presbyterian David H. Koch Center, Dr. Newman leads the multidisciplinary breast oncology programs which provides the finest, most compassionate care to women and men affected by breast cancer. In this role, Dr. Newman leads a team of breast surgeons that uses state-of-the-art screening and imaging technologies, innovative surgical and reconstruction techniques, and radiation therapies to provide patients with comprehensive breast cancer care. Previously, she worked at the Henry Ford Health System, where she served as director of the breast program covering multiple hospitals throughout Michigan since 2015. She is also the Founding Medical

Director for the International Center for the Study of Breast Cancer Subtypes, which became headquartered at Weill Cornell Medicine with Dr. Newman's recruitment. Dr. Newman was Professor of Surgery and Director of the Breast Care Center for the University of Michigan in Ann Arbor, Michigan, where she also served as Program Director for the Breast Fellowship from 2002 to 2015. Dr. Newman holds a Masters Degree in Public Health from Harvard University, and she also obtained her undergraduate education at Harvard University with a major in chemistry. She attended medical school and completed her general surgery residency training at the State University of New York Downstate Medical Center in Brooklyn. After leaving the University of Michigan she was appointed Adjunct Professor in the UM Department of Obstetrics and Gynecology. She also served previously as Associate Director for the Walt Breast Center at Wayne State University/Karmanos Cancer Institute for two years. Dr. Newman's primary research has focused on ethnicity-related variation in breast cancer risk and outcome, the evaluation and management of high-risk patients; broadened applications for neoadjuvant chemotherapy, and special surgical techniques such as the skin-sparing mastectomy and lymphatic mapping/sentinel lymph node biopsy. Her extensive research related to disparities in breast cancer risk and outcome has been published in numerous peer-reviewed medical journals and was featured in CNN's documentary "Black in America 2". She has also been the featured breast cancer medical expert for NBC's "Today Show" twice (2014 and 2017) as well on CBS Nightly News (2015). She maintains a very active community service record, and currently serves as Chief National Medical Advisor for the Sisters Network, Inc., a national African American breast cancer survivors support organization. She oversees an international breast cancer research and training program involving a network of physicians and facilities in Ghana, Ethiopia, Nigeria, Uganda, Haiti, Barbados, and Canada. This program has focused on the study of triple negative breast cancer in women with African ancestry. Her work has been acknowledged via several awards, such as "Top Blacks in Health Care 2018"; Phenomenal African American Women of 2018"; "Esteemed Women of Michigan 2018"; Crain's "Health Care Hero" in 2017; 2012 Triple Negative Breast Cancer Foundation Hero Award; and the 2010 National Medical Association Woman in Medicine Award. She was named "Michiganders of the Year" in 2011; and an "Oprah's Angels" for breast cancer work by Oprah magazine in 2012. She has received the University of Michigan 2012 Community Service Award; the 2013 Sarah Goddard Power Award for Advancement of Women in Academic Medicine; and the 2015 Harold Johnson Diversity Award. She has been named one of Detroit's "Top Docs" and "Top Doctors of America" for several years. Dr. Newman has also been awarded the coveted title of Komen Scholar and was appointed to the Komen Scientific Advisory Board.



Prof. Jeffery Reiner, MD (Presenter) is an Assistant Attending Radiologist at Memorial Sloan Kettering Cancer Center and Assistant Attending Professor of Clinical Radiology at Weill Cornell Medical Center in New York City, NY. He received his medical degree from the University of Maryland School of Medicine in Baltimore, Maryland and completed his Diagnostic Radiology training at George Washington University Hospital in Washington, D.C. He completed further fellowship training in Oncologic Imaging and Breast Imaging at Memorial Sloan Kettering Cancer Center. He currently specializes in Breast and Body Imaging, including interventional breast procedures such as stereotactic, ultrasound, and MRI guided biopsies, as well as presurgical radioactive seed localizations. As a clinician, Dr. Reiner has striven to provide the most up to date and most compassionate care that he can give to his patients and has been a patient advocate on both the local and national level. As

an educator, Dr. Reiner has taken an active role in the education of the breast and body imaging fellows, and currently heads the rotating Weill Cornell residents as they rotate through the breast imaging section. As a leader, he has taken an active role in the department, as the chair of the Diversity Committee, Co-Vice Chair of the Mentoring Committee, and Co-Director of regional mentoring, and is also a member of the American College of Radiology's Patient and Family Centered Care Commission. He has also been active in local societies including the New York Breast Imaging Society where he currently serves as co-treasurer. Dr. Reiner has multiple publications in breast imaging predominantly involving MRI, radiomics and machine learning, and has given multiple breast imaging related lectures on the local, national, and international level.



Prof. Evelyn (Toyin) Taiwo, MD (Presenter) obtained her medical degree at Temple University School of Medicine in Philadelphia, following her residency at Boston University Medical Center, and she completed a three-year fellowship in hematology and oncology at the University of Texas Southwestern Medical Center in Dallas in 2011. Dr. Taiwo served as Assistant Professor of Medicine at the State University of New York, Downstate Medical Center in Brooklyn from July 2011-2019, and as Attending Physician and Hematology-Oncology Fellowship Program Site Director at Kings County Hospital. While at Kings County Hospital, she served in a leadership role as Director of the Breast Cancer Clinic, overseeing the operations, research activities, clinical care delivery, and education. As a researcher, Dr. Taiwo has contributed to a number of studies on cancer presentation in urban and minority patient populations.



Dr. Uchenna Anthony Umeh, MBBS (Presenter) obtained a Bachelor Science degree in Botany (BSc. Hons), Bachelor of Medicine & Bachelor of Surgery (MBBS) and MSc. in Human Reproduction from University of Nigeria Nsukka, He specialized in Obstetrics and Gynaecology from West Africa College of Surgeons (FWACS). He has attended several conferences (both local & international) and workshops where he presented papers. He has several publications and belongs to some professional bodies. He is currently a Senior lecturer at the Dept. of Obstetrics and Gynaecology, College of Medicine, University of Nigeria Ituku/Ozalla Enugu Nigeria and Consultant Gynaecology unit University of Nigeria Teaching Hospital Ituku/Ozalla Enugu Nigeria.



Dr. Eleanor M. Walker, MD (Presenter) Director of Breast Radiation, Henry Ford Health System Department of Radiation Oncology Medical Director, HFHS Center for Integrative Medicine joined Henry Ford Hospital in 1993 and is board certified in Radiation Oncology. She earned her a B.A. from the University of Notre Dame, and her medical degree from Washington University in St Louis. She did her internship at Vanderbilt University and her residency at the University of Maryland. Dr. Walker is very active in Integrative medical research. She conducted a study on the use of Acupuncture for Vasomotor Symptoms in Breast Cancer Patients funded by a grant from the Susan B. Komen Foundation. Recently Dr. Walker completed the ExCITE study (Exercise and Cancer Integrative Therapies Education) a pilot study of the

effectiveness lifestyle intervention during and after cancer treatment for Breast and Prostate Cancer Patients funded by HFHS Philanthropy. She is recently completed as a Co-PI an INPHAASE Grant on “Survivorship Care Planning Among Racially Diverse Breast Cancer Survivors.” She is currently Co-PI of a Breast Cancer Research Foundation Grant on “Biomarkers and Cardiac MRI as Early Indicators of Cardiac Exposure Following Breast Radiotherapy.” Her special areas of interest include prostate cancer, geriatric oncology, clinical trial recruitment and health care disparities. Dr. Walker is a member of the ACR Appropriateness Criteria Expert Panel on RO-Breast. She is also a member of the Henry Ford Hospital Cancer Coordinating Committee and the institutional Principal investigator for NRG Oncology, the institutional PI for MROQC (Michigan Radiation Oncology Quality Consortium). Dr. Walker is a member of the Health Disparities and Breast Working Committee for NRG Oncology. She is a nationally recognized leader in Breast Radiation Oncology and has thus participated in the development of many national guidelines and trials. Her hobbies include traveling, scrapbooking, reading, singing, jazz and Latin dancing. Dr. Walker is a native of Brooklyn, New York.

PLANNING COMMITTEE

Local Organizing Committee, Ghana

Dr. Ishmael Kyei, MBChB*

Department of Surgery, KATH

Dr. Ernest Adjei, MBChB

Department of Pathology, KATH

Dr. Ernest Baawuah Osei-Bonsu, MBChB

Department of Oncology, KATH

Dr. Joseph K. Oppong, MBChB

Department of Surgery, KATH

Dr. Kwasi Ankomah, MBChB

Department of Radiology, KATH

Mr. Andrew Boakye Yaidom, MSc.

Department of Surgery, KATH – ICSBCS

Mr. Kareem Osei Acheamfour, BSc.

Department of Oncology, KATH

Weill Cornell Medicine

Dr. Kofi K. Gyan, DVM, MPH, MPA*

Int'l. Ctr. for the Study of BC Subtypes

Prof. Lisa A. Newman, MD, MPH, FACS

Int'l. Ctr. for the Study of BC Subtypes

Prof. Melissa B. Davis, Ph.D.

Int'l. Ctr. for the Study of BC Subtypes

Prof. Vivian J. Bea, MD, FACS

Int'l. Ctr. for the Study of BC Subtypes

Prof. Evelyn (Toyin) Taiwo, MD

Int'l. Ctr. for the Study of BC Subtypes

Brian Stonaker, MS

Int'l. Ctr. for the Study of BC Subtypes

Dr. Rachel Martini

Int'l. Ctr. for the Study of BC Subtypes

Ms. Cassandra Mills

Int'l Ctr. for the Study of BC Subtypes

Ms. Tiffany S. Jackson

*Administrative Supervisor, Department of Surgery
Weill Cornell Medicine*

***denotes Co-Chair**



Weill Cornell Medicine
Breast Surgery

